

SAFETY VALVES TYPE SVE 06



SAFETY VALVE TYPE V600 ORDERING NO SVE 06 - 087202

Application: Schrupp safety valves type SV06-1 and SV06-2 are spring loaded valves designed to protect compressors from over-pressurization.

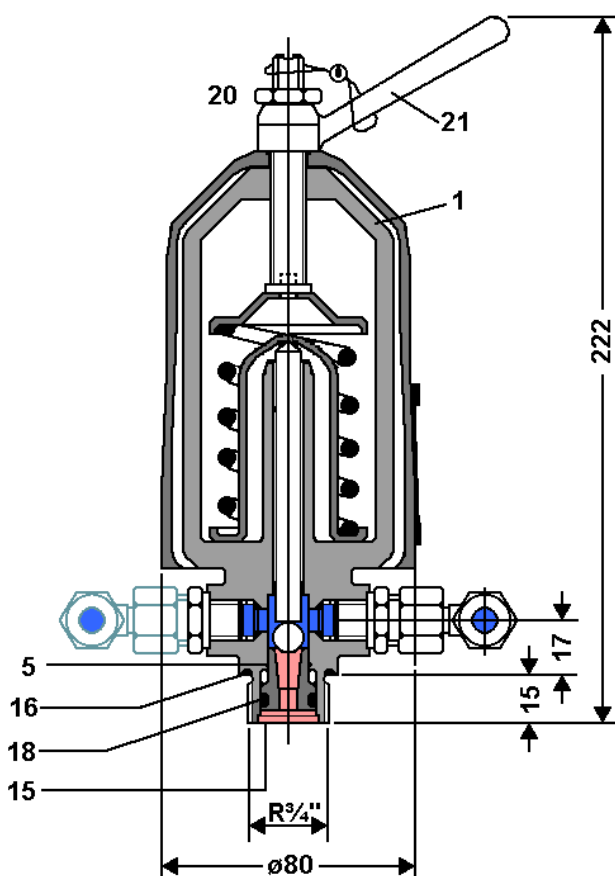
Schrupp proportional safety valves can also be used to protect pressure vessels containing non-poisonous gases.

- Special characteristics:** TUV approval up to 350 bar
Acc. to 214/68/EC gases Group 2, Category IV, Certificate according to Modul B (TÜV)
Low hysteresis and good operational control even under adverse conditions.
Compact dimensions
Robust design
Easy to maintain
- Technical Data:** Size: DN6
Operating Pressure: 55 -350bar
Flow rate in L/min: 32.2 x p(bar)
Ambient Temperature: 0-70 degrees C.
Manufactured according to AD specification no. A2 for proportional safety valves.
- Notice:** Valves are shipped with plugged ports. Please remove before installation



SAFETY VALVES TYPE SVE 06

■ = Primärdruck
■ = Sekundärdruck



Functional Description:

Port R is connected to the compressor or high pressure vessel. In the event of over-pressure, the ball lifts from the seat and bleeds pressure through the side outlet port. The elbow fittings can be arranged to send the air in any direction. To check valve function, turn lever #21 counter-clockwise to valve housing, #1. This test will not affect the pressure set point.

The set pressure can be adjusted by turning lever #21 after loosening locking nut #20. (Turn clockwise to increase pressure set point.) After adjustment, re-tighten locking nut #20. The valves do not require regular servicing. Periodically, tests are required. according to 2014/68/EC.

The valve can be ordered for different pressure adjustment ranges

SVE06 - 087201	adjust. pressure	55 - 66bar
SVE06 - 087199	adjust. pressure	66,1- 85bar
SVE06 - 087202	adjust. pressure	85,1-110bar
SVE06 - 087200	adjust. pressure	110,1-135bar
SVE06 - 087400	adjust. pressure	135,1-150bar
SVE06 - 087204	adjust. pressure	150,1-175bar
SVE06 - 087203	adjust. pressure	175,1-220bar
SVE06 - 160253	adjust. pressure	220,1-250bar
SVE06 - 087975	adjust. pressure	250,1-350bar

Ordering Information

SVE 06 - **345** - **087957**

Type

Set Pressure [bar]

Productno.

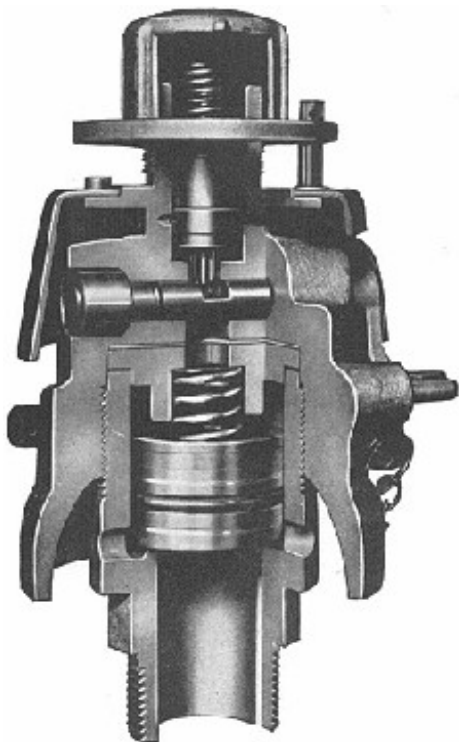
Ordering Information seal kit:

Part no.: SVE 06 VTS - 087400

- Item 5 Seat
- Item 15 O-Ring
- Item 16 O-Ring
- Item 18 Back Ring



SAFETY VALVES TYPE SVE 30 (POP OFF)



Safety Valves Type S650:

Ordering no. SVE 30

Application: The Schrupp SV30 safety valve is a spring loaded valve used to protect vessels containing non-toxic gases from over-pressurization. Upon reaching the set pressure, the valve opens fully and immediately.

Special Features:

TUV approval up to 44 bar acc. to 2014/68/EU gases Group 2, Category IV, Certificate according to Modul B (TÜV),

Low hysteresis and good operational control even under adverse conditions.

Compact dimensions

Robust design

Easy to maintain

Technical Data:

Nominal Size: DN 30 mm

Set pressure from 4.5 to 44 bar

Flow rate: $4750 \times p$ in liter/min

Mass: approximately 3.2 kg

Ordering Information

SVE30 - **36** - **156148**

Adjusted Set
Pressure
[bar]

Ordering Information Seal Kit:

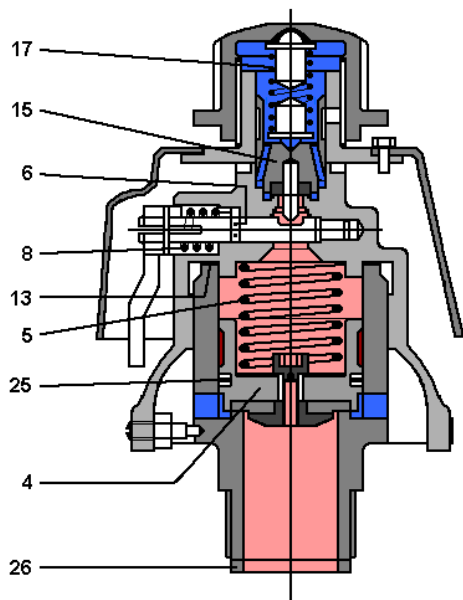
SVE30 VTS - **156148** - 92

Pressure Range[bar] / Productno.

4,5 - 6	089049
6,1 - 8	089060
8,1 - 13	089061
13,1 - 16	089062
16,1 - 21	089063
21,1 - 25	089064
25,1 - 35	089065
35,1 - 44	156148

SAFETY VALVES TYPE SVE 30 (POP OFF)

Maintenance and Operation:



■ = Primary Pressure
■ = Relieved Pressure

1. Shipping and Storage

During transportation or storage, the valve should be locked in the open position by use of the manual handle. All ports must be plugged. To open the valve, the lever should be moved against the spring force to the end position and fixed by the holding clamp.

2. Installation

On pressure vessels or pipes with minimum inside diameter of 1 inch. For installation, use only original seals; never use glue or other additional seal materials.

3. Adjustment of Set Pressure

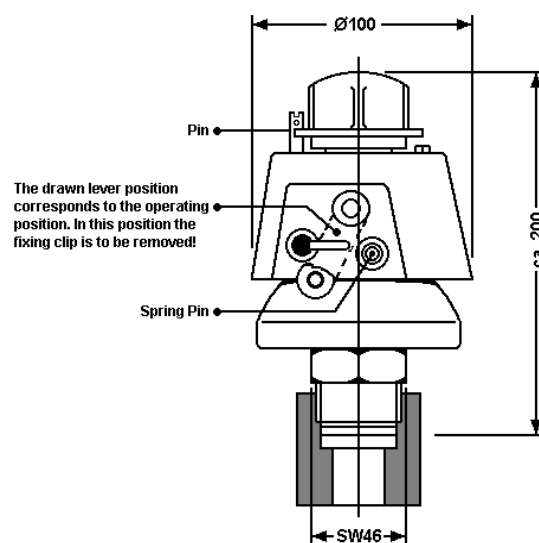
After removing the pin the set pressure can be changed, by turning the thread cap clockwise (increases set pressure) or counter-clockwise (reduces set pressure).

4. Noise protection

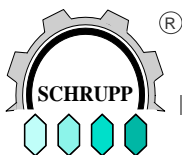
Because of the possible production of high noise levels, we recommend the use of an ear protection.

Mode of operation:

- Closing:** With increasing pressure the valve insert (15) rises out of its seat and vents air to atmosphere. Then the piston (4) rises out of its seat and the valve opens.
- Open:** After blowing the pressure off over the piston (4) the valve insert (15) closes fast; the closing process of the piston (4) is delayed until the pressure build-up over the piston (4) escapes through the drilling in the piston. Thus, closing of the piston (4) takes place not via the strength of the spring (5), but with the pressure on the differential area of the piston (4) opposite the valve seat.



Technical data subject to change



SAFETY VALVES TYPE SVE 10



TÜV approved Safety Valve for compressed air.

2014/68/EU, Group2, Category IV

Set Pressure: 0,3 – 50 bar

Operating Temperature: max 180°C

DN 10mm

Ordering Information

SVE10 - 45 – Part no.

Set Pressure [bar]

Type

Part no.	Connection	Pressure	SW	A	C	D
850803	G3/8"	0,3 – 8,5 bar	27	22	75	12
850803		8,6 – 40 bar	27	22	95	12
850803		40,1– 50 bar	27	22	120	12
850804	G1/2"	0,3 – 8,5 bar	27	26	75	14
850804		8,6 – 40 bar	27	26	95	14
850804		40,1– 50 bar	27	26	120	14
850805	G3/4"	0,3 – 8,5 bar	32	32	75	16
850805		8,6 – 40 bar	32	32	95	16
850805		40,1– 50 bar	32	32	120	16

Dimensions in mm

