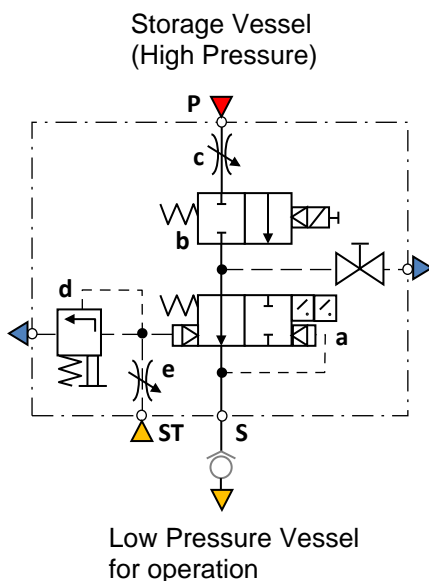


## SAFETY DEVICES TYPE SHE

Safety devices of the type SHE are used to protect downstream storage vessels which are being fed by a higher operating pressure, against over pressurization. As opposed to the function of a typical safety valve, the Schrupp SHE valve protects the lower rated pressure vessel by closing the interconnection between the two vessels once the set pressure has been reached. In this way, the operational (low pressure) vessel is protected, while at the same time, maintaining the stored pressurized air necessary to ensure operation of the selected component, such as electrical switch gear.

The Schrupp SHE safety device includes the following elements:

- Locking valve with electrical position indication switch.
- Solenoid actuated, pilot operated, 2/2 way sluice valve.
- Throttling Device.
- Pressure Relief Valve
- Pilot Throttle.
- Bleed Valve.

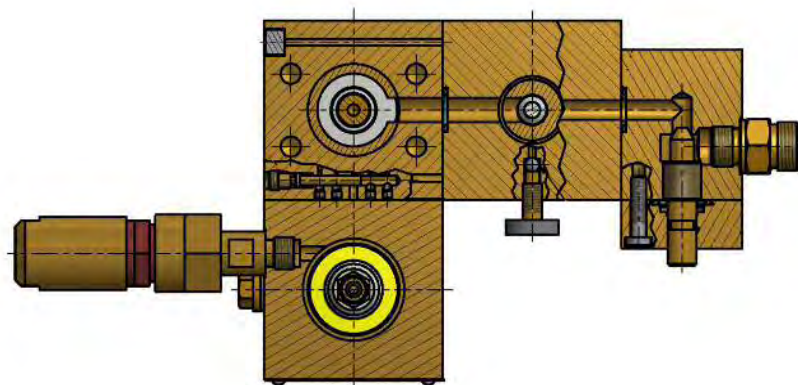
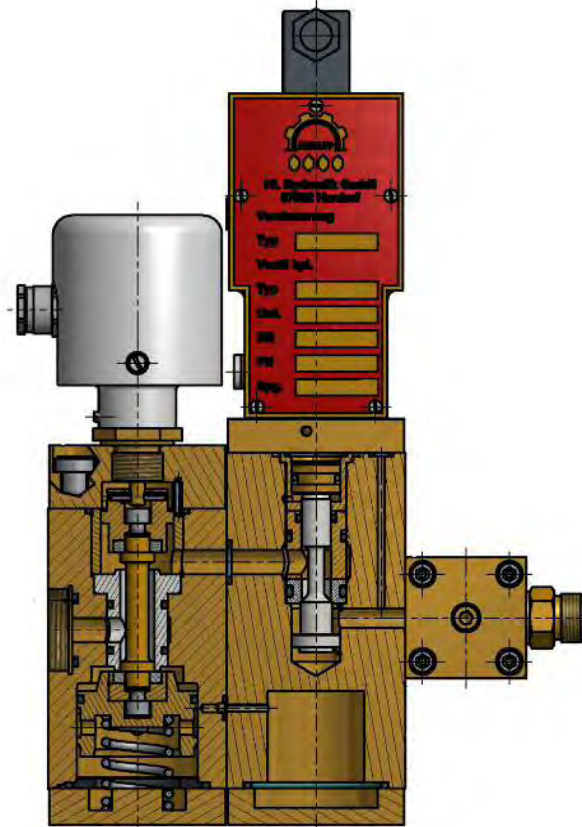
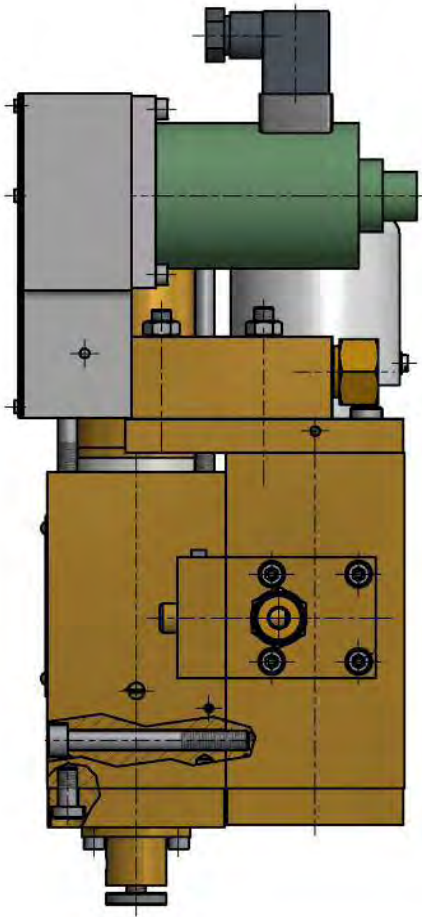


For safety reasons a check valve has to be installed at the S line.  
Optional the safety device can be ordered with an integrated non return valve also.

### Technical Data

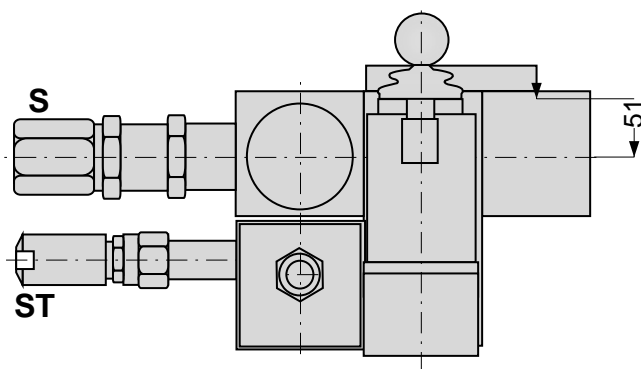
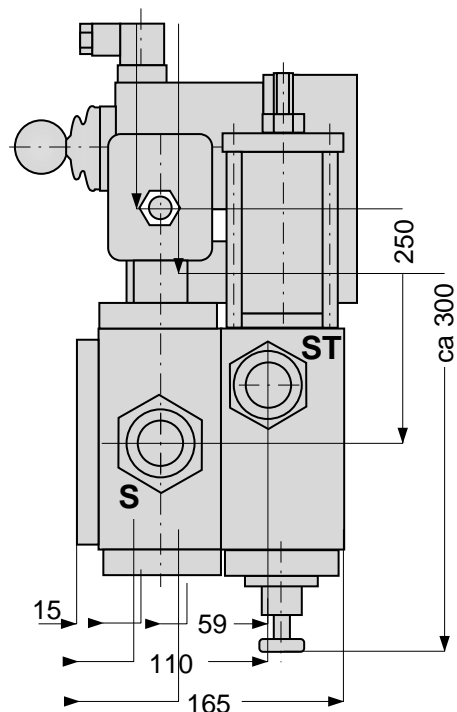
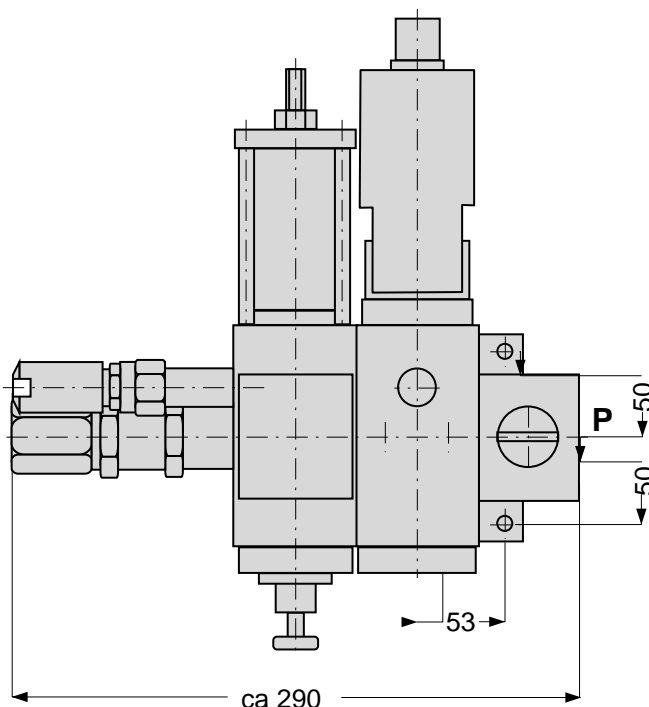
TYPE	SHE MP	SHE HP	
Nominal size	20	10	mm
Primary pressure	64	64 - 200	bar
Secondary pressure	5 – 40	15 – 40	bar
Max flow rate	56,000	56,000	l/min
Mass	ca. 320	ca. 320	N
Nominal size of pressure relief valve	6	6	mm
Port P	M36 x 2	G 3/8"	
Port T	M36 x 2	M36 x 2	
Port ST connection for pipes with outside dimension:	10	10	mm
According to 2014/68/EU, Group 2, Category IV			

## SAFETY DEVICES TYPE SHE





## SAFETY DEVICES TYPE SHE

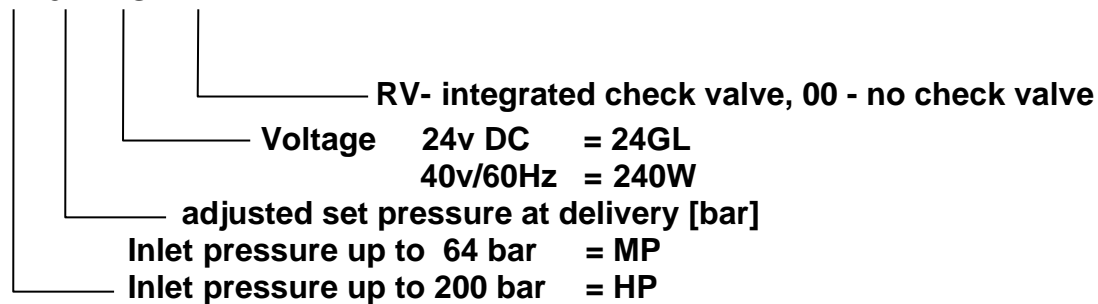


### Port Connections

SHE MP	P,T	- M36 x 2
	St	- 10 mm
SHE HP	P	- G 3/8"
	T	- M36 x 2
	St	- 10 mm

### Ordering Information

**SHE MP 34 24GL RV**



**Spare parts kit: SHE MP 24GL RV VTS**