



HP – PNEUMATICS

System Solutions for Industry

HP Pneumatics

Water- and Special- Fluid Hydraulics

Equipment for Road Safety Training Centres

Fire Fighting Systems for Transformers

Live Line Washing Systems for Insulators

HL-Hydraulik GmbH

Kupferhütte 5C

D-57562 Herdorf

Tel: **+49 (0)2744-9324-0**

web: **www.hl-hydraulik.de**

e-mail: **info@hl-hydraulik.de**

E1 FEB22



HL Hydraulik GmbH

Kupferhütte 5c

57562 Herdorf

Telefon: +49 (0) 27 44 - 93 24 - 0

E-Mail: info@hl-hydraulik.de

www.hl-hydraulik.de

HP Pneumatic (Drucklufttechnik)

VDEW empfohlene Druckluftsysteme und Komponenten bis 350 bar

HP Pneumatic

Electrical Industry (VDEW) recommended systems and components up to 350 bar



Wasser- und Sonderhydraulik

Edelstahl-Cartridgeventile und Vorsteuerungen bis 350 bar (800 bar), Nennweiten 2 bis 250 mm Entzunderungsventile, Druck- und Wegeventile, Sprühventile zur partiellen Walzenkühlung.



Water- and Special-Fluid Hydraulics

Stainless steel cartridges and pilot valves up to 350 bar (optional 800 bar), size 2 to 250 mm (08-10 inch).

Descaling valves, directional, check, flow and pressure control functions, spray valves for roll coolant systems.



Technik für Fahrsicherheitszentren

Innovative Technik zur Simulation kritischer Situationen im Straßenverkehr: Schleuderplatten, Fahrbahnbewässerungen, Wasserhindernissysteme

Equipment for Road Safety Training Centers

To simulate critical traffic situations.
Vehicle skidding devices, water film systems, water obstacles

Feuerlöschsysteme für Transformatoren

Fremdenergie-unabhängige Wassersprühsysteme

Fire Fighting Systems for Transformers

Water spraying systems for operation independent from an external power supply

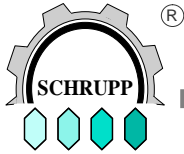


Isolatorenreinigungssysteme

Stationäre Wassersprühsysteme zur Reinigung unter Spannung

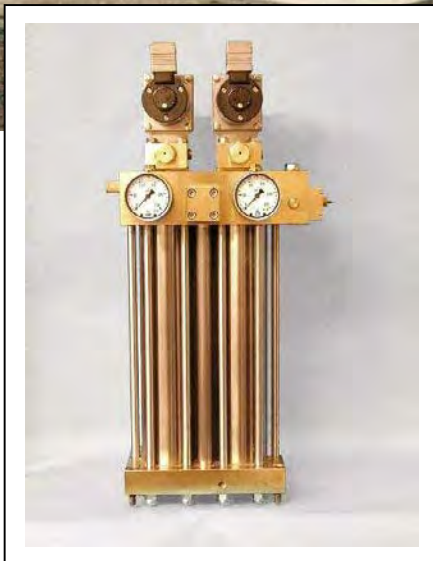
Insulator Cleaning Systems

Water spraying systems for stationary live electrical line cleaning



HP – PNEUMATICS

System Solutions for Industry



HP Pneumatics

Water- and Special- Fluid Hydraulics

Equipment for Road Safety Training Centres

Fire Fighting Systems for Transformers

Live Line Washing Systems for Insulators

HP – PNEUMATICS

System Solutions for Industry

Traditional Valves

For high voltage breaker systems, accumulator safety functions and industrial applications up to 350bar.



Valves and Systems

Modular designed components and manifolds in cartridge-technology for industrial applications. Pressures up to 500bar, sizes from 4 to 100mm.

High flexibility, compact design

Reduction of maintenance and interruption time



HP – PNEUMATICS

System Solutions for Industry

Gas Dryer Stations

For laboratories and industrial productions with a need for continuous high quality in the compressed air supply.

For high pressure breathing air in diving and rescue systems.

For high voltage breaker systems to prevent corrosion and icing.

Pressures up to 350bar and dew points below -50°C can be realized.



Compressor Stations

Individual compressor units for in- or outdoor use, complete assembled including necessary valves and electrically control systems.





HP-PNEUMATICS

Traditional Valves



Manual Shut-Off and Check Valves

PN 64 - DN 15, 25

PN 350 - DN 8

Type

HAV 15, HAV 25

HAV 08



Pressure Maintaining and Pressure Maintaining Check Valves

PN 60/350 - DN 16

PN 400 - DN 5

Type

DHV 16/12

DHV 05, DRV 05



Safety Valves

PN 350 - DN 6

PN 40 - DN 30/15

Type

SVE 06

SVE 30/15



Safety Devices

PN 64 – DN 20

PN 200 – DN 10

Type

SHE 06

SHE 20

Pressure Reducing Valves

PN 200 – DN 8

PN 40 – DN20

Type

DMV 08

DMV 20

Systems and Cartridge Technology



Cartridge Program Directional, Sluice Valves

PN 400 – DN 6

PN 250 – DN16

Type

WEV 06

WEV 16



Gas Dryer

PN 350bar

Q 1000L/min /1400L/min

Q 1100-3300L/min

Type

GTR 10, GTR 14

GTF

CARTRIDGE PROGRAM



Stainless Steel Cartridge valves according to DIN24342

The valves are designed for use with water, water and oil emulsions, oil and gases. Their robust construction and compact design provide long life, ease of maintenance, and high performance.

These slip in cartridge type valves can be combined in many different ways to satisfy the requirements of a wide variety of applications. The sealed poppet design provides drop tight, leak free shut off.

Product range:

Cartridges for directional functions

Soft seated ND10 to 100 for compressed air and gases according to Group 2, 27/93/EG up to 350bar

Functional description

These valves are designed for use with special fluids:

No metal to metal contact at the sliding surfaces.

- the use of non-lubricating mediums is possible.

All pressurized areas are separated by soft seals

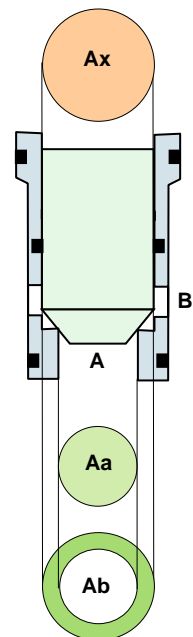
- for thin fluids and gases under high pressure.

Special geometry and non-corroding material

- for gases with an high humidity.

An important dimension for the function of cartridge valves is the surface ratio of the seat area A_a and the annulus area A_b to the pilot area P_x . Schrupp soft seated cartridge valves with metal support do have an ratio of 1:2 and can be used for flow in either direction.

Soft-seated valves are suitable for use in shut-off and directional functions. These valves are absolutely leak-free even for long-term operation in gas or high-pressure circuits.

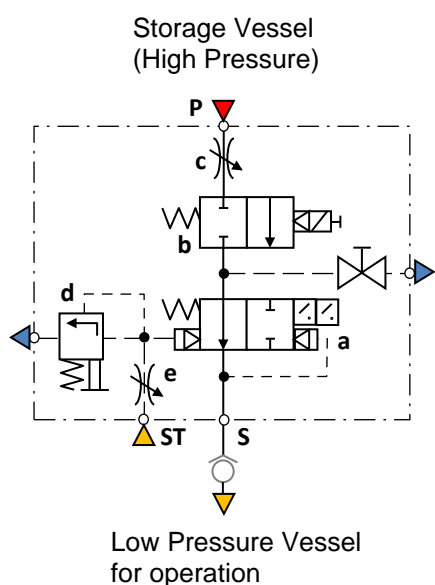


SAFETY DEVICES TYPE SHE

Safety devices of the type SHE are used to protect downstream storage vessels which are being fed by a higher operating pressure, against over pressurization. As opposed to the function of a typical safety valve, the Schrupp SHE valve protects the lower rated pressure vessel by closing the interconnection between the two vessels once the set pressure has been reached. In this way, the operational (low pressure) vessel is protected, while at the same time, maintaining the stored pressurized air necessary to ensure operation of the selected component, such as electrical switch gear.

The Schrupp SHE safety device includes the following elements:

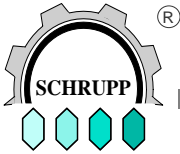
- Locking valve with electrical position indication switch.
- Solenoid actuated, pilot operated, 2/2 way sluice valve.
- Throttling Device.
- Pressure Relief Valve
- Pilot Throttle.
- Bleed Valve.



For safety reasons a check valve has to be installed at the S line.
Optional the safety device can be ordered with an integrated non return valve also.

Technical Data

TYPE	SHE MP	SHE HP	
Nominal size	20	10	mm
Primary pressure	64	64 - 200	bar
Secondary pressure	5 – 40	15 – 40	bar
Max flow rate	56,000	56,000	l/min
Mass	ca. 320	ca. 320	N
Nominal size of pressure relief valve	6	6	mm
Port P	M36 x 2	G 3/8"	
Port T	M36 x 2	M36 x 2	
Port ST connection for pipes with outside dimension:	10	10	mm
According to 2014/68/EU, Group 2, Category IV			



GAS DRYER STATIONS

SCHRUPP GAS DRYER STATIONS

Optional with Bypass

**For compressed Air and other
non- aggressive gaseous media:**

- drying
- de-oiling
- filtering

this means

- less corrosion
- less wear and
- no icing
- depressurized standby function

and therefore

- greater service life
- lower maintenance costs and
- fail safe operation

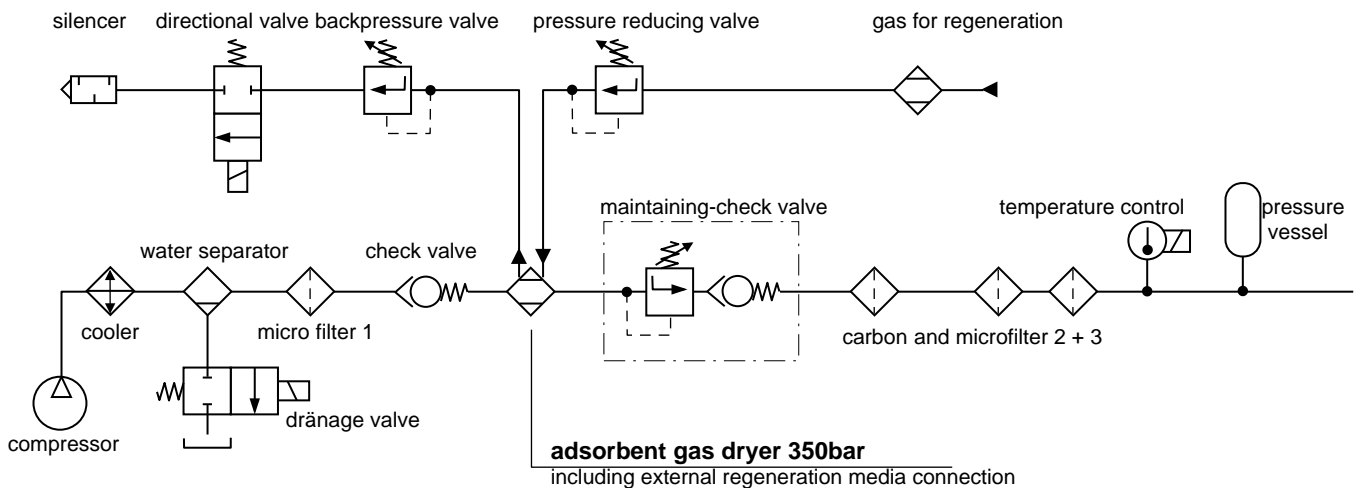


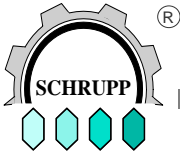
GAS DRYER STATIONS

Gas Processing Systems

Efficient Solutions for processing breathing air or industrial atmosphere.

- designed for continuous production of compressed air or class 2 gases
- excellent efficiency by use of an external regeneration media
- dew points below -50°C
- temperature compensated processing
- drying process independent from inlet temperature
- no thermal regeneration necessary
- operation pressures up to 350bar





GAS DRYER STATIONS

**For high pressure air and
non aggressive Medium for:**

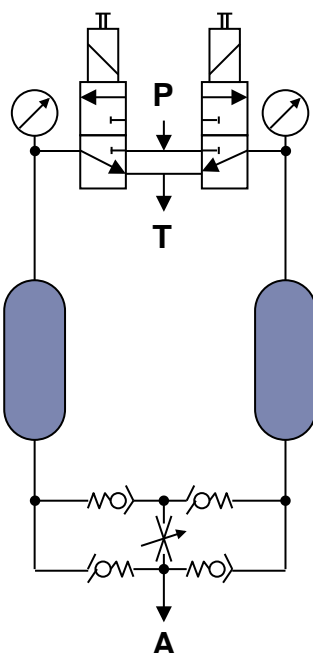
- drying
- de-oiling
- filtering

- Benefits

- less corrosion
- less wear
- no icing

and consequently

- longer service life
- lower maintenance costs
- fail-safe operation



Orderno. and example

GTR 10 **HP 335** **024**

Voltage

024 24V DC

240 220-240V/50Hz

Oper. pressure

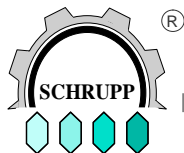
MP 30-250bar

HP 250-350bar

Type

GTR 10 Q max 1000L/min

GTR14 Q max 1400L/min



HL Hydraulik GmbH



www.hl-hydraulik.de

Kupferhütte 5c
D 57562 Herdorf
Tel +49 (0)2744-9324-0
schrupp@hl-hydraulik.de